

Application Circuit

(1) Crystal Resonator

The TLCS-900 incorporates the oscillation circuit, so that it can easily obtain the required clock by connecting the resonator to pins (X1 and X2).

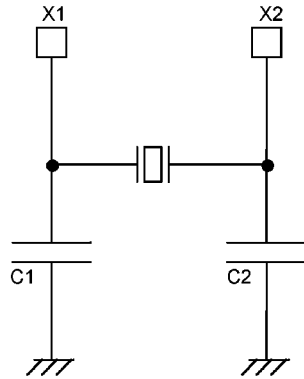


Figure 1. Crystal Resonator Connection

(2) Ceramic Resonator

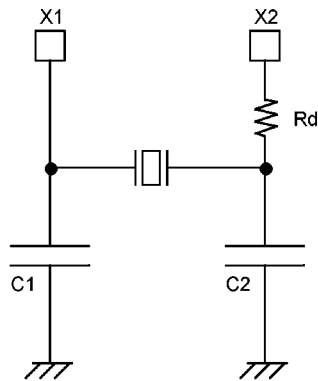
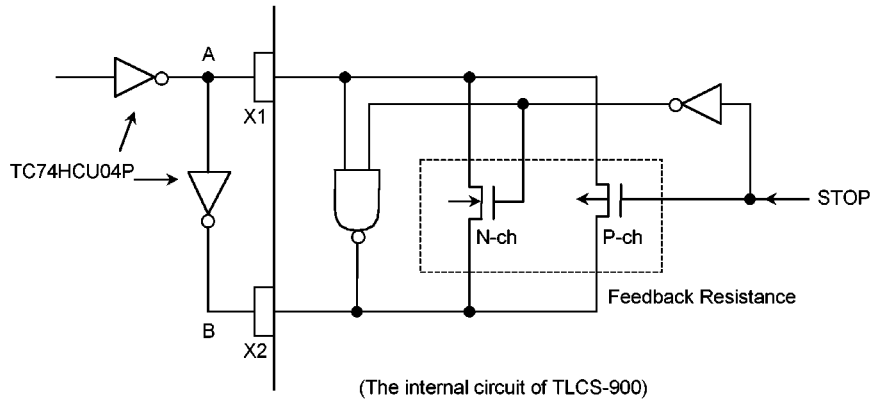


Figure 2. Ceramic Resonator Connection

Please contact to the suppliers for C1, C2 and Rd of the resonators to be used.

(3) Recommended Circuit for External Clock Input



Condition : Duty of point A $50 \pm 5\%$ (@ $V_{cc}/2$)

CL = 50 pF (max) of point A, B

The single drive from X1 is recommended for application using STOP mode, because X2 is fixed to "H" level (X1: high-impedance).

(4) Power on Reset Circuit

